

Missisquoi Watershed

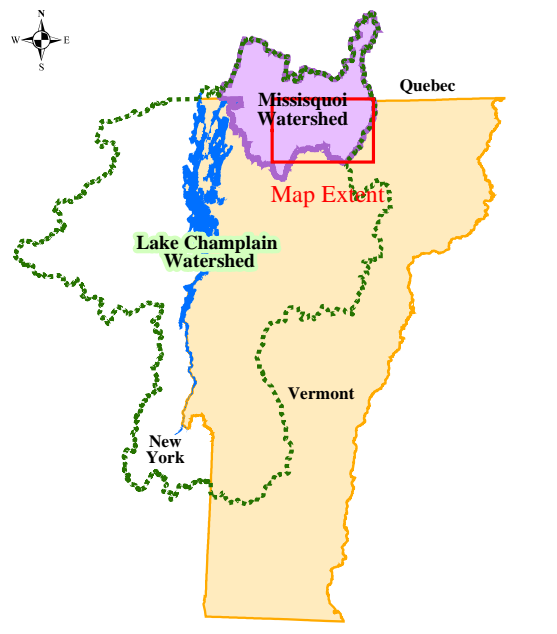
Proposed Wild and Scenic Designation

Missisquoi and Trout Rivers

- Major River or Stream
- River Segments Proposed for Wild and Scenic Designation
- County Boundary
- Municipal Boundary
- State Highway
- Federal Highway
- Interstate Highway
- International Boundary

0 1 2 4 Miles

0 1 2 4 Kilometers



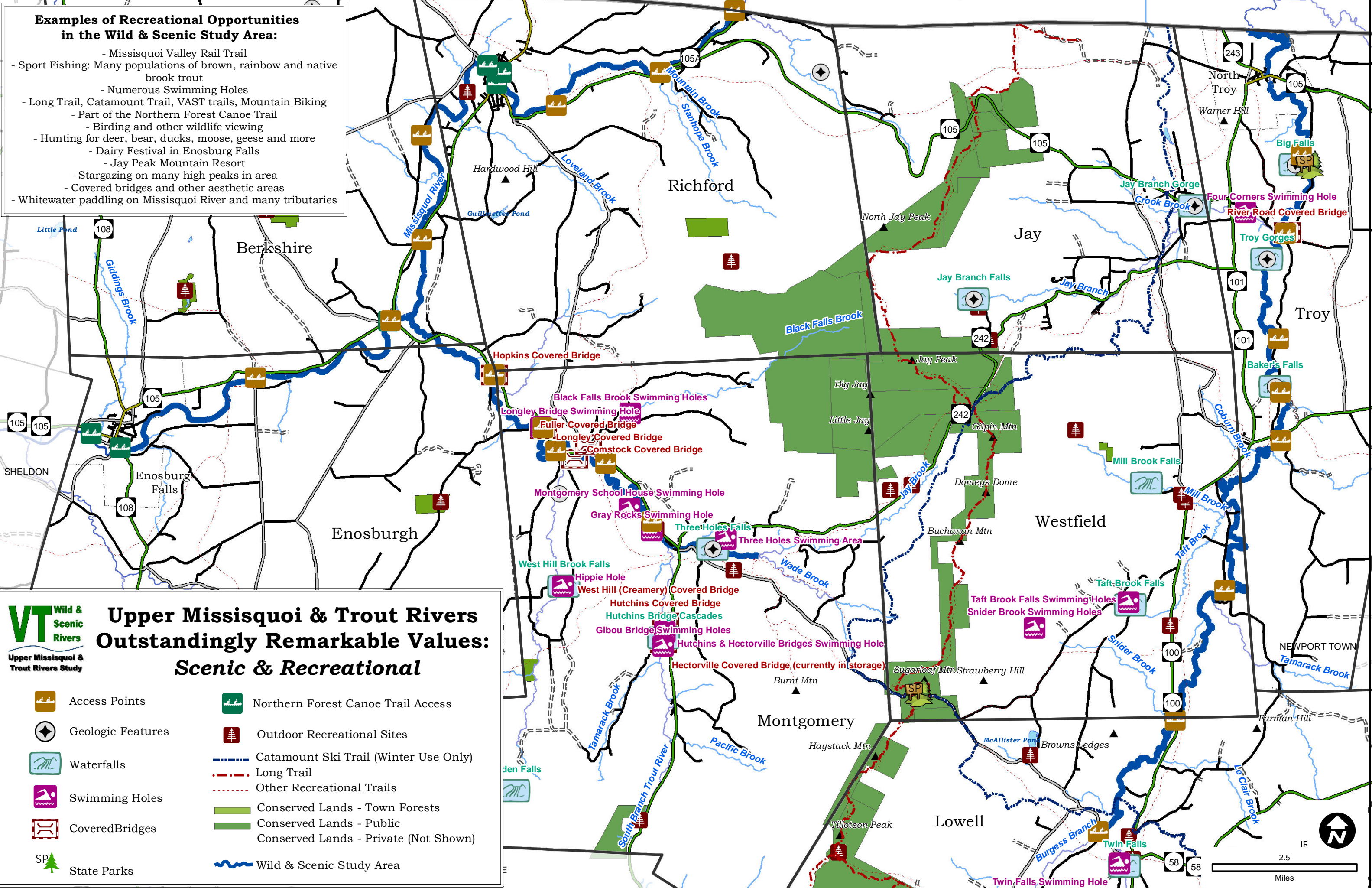
1 inch = 58.2 miles



Map Prepared By:
 Northwest RPC
 155 Lake Street
 Saint Albans, VT 05478
 802-524-5958
 www.nrpcvt.com
 March, 2013
 For Planning Purposes Only

Examples of Recreational Opportunities in the Wild & Scenic Study Area:

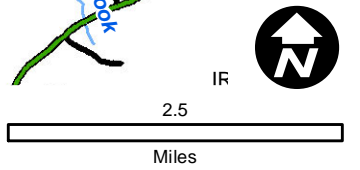
- Missisquoi Valley Rail Trail
- Sport Fishing: Many populations of brown, rainbow and native brook trout
- Numerous Swimming Holes
- Long Trail, Catamount Trail, VAST trails, Mountain Biking
- Part of the Northern Forest Canoe Trail
- Birding and other wildlife viewing
- Hunting for deer, bear, ducks, moose, geese and more
- Dairy Festival in Enosburg Falls
- Jay Peak Mountain Resort
- Stargazing on many high peaks in area
- Covered bridges and other aesthetic areas
- Whitewater paddling on Missisquoi River and many tributaries

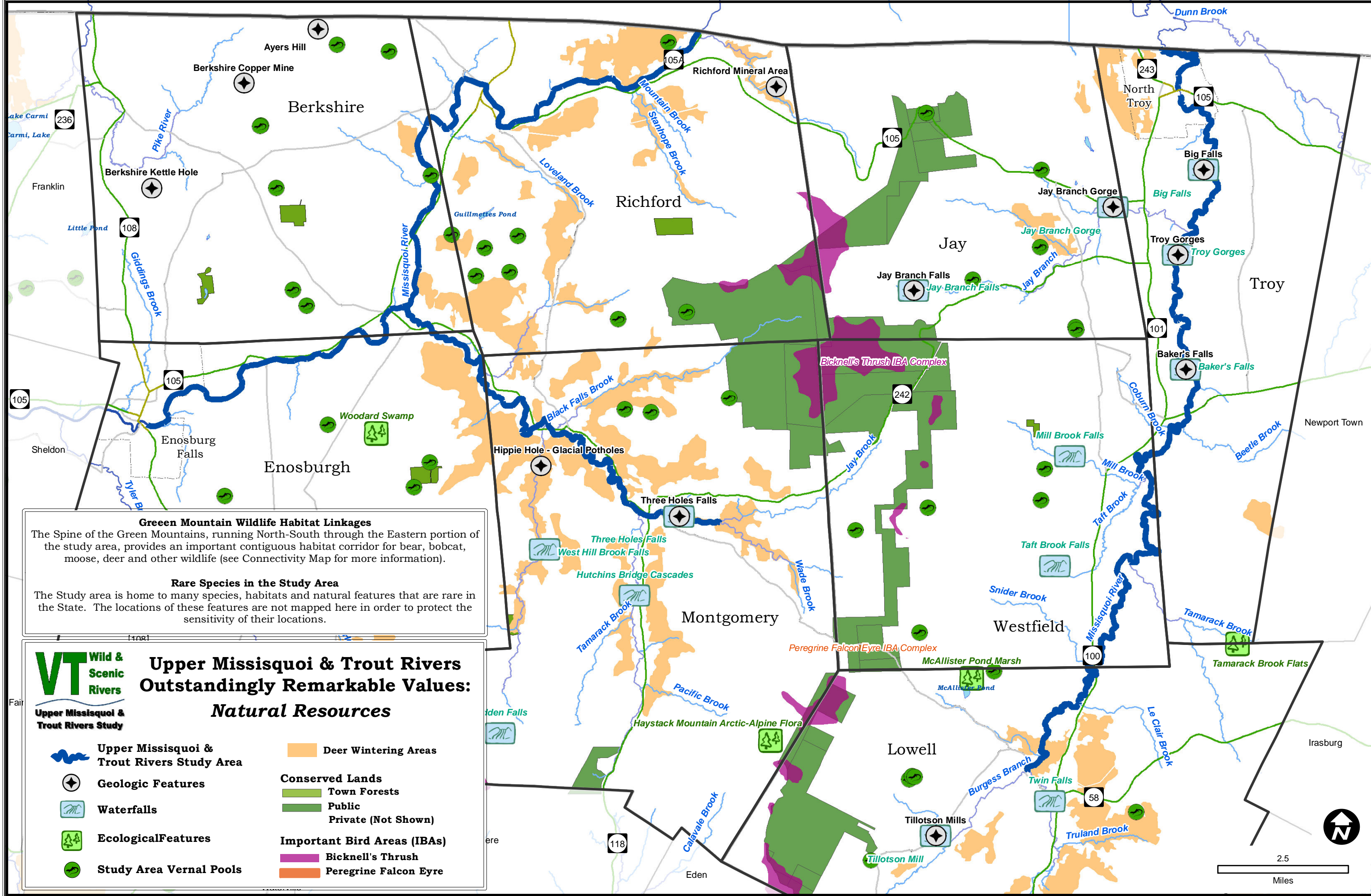


VT Wild & Scenic Rivers
 Upper Missisquoi & Trout Rivers Study

Upper Missisquoi & Trout Rivers Outstandingly Remarkable Values: Scenic & Recreational

	Access Points		Northern Forest Canoe Trail Access
	Geologic Features		Outdoor Recreational Sites
	Waterfalls		Catamount Ski Trail (Winter Use Only)
	Swimming Holes		Long Trail
	Covered Bridges		Other Recreational Trails
	State Parks		Conserved Lands - Town Forests
			Conserved Lands - Public
			Conserved Lands - Private (Not Shown)
			Wild & Scenic Study Area





Green Mountain Wildlife Habitat Linkages

The Spine of the Green Mountains, running North-South through the Eastern portion of the study area, provides an important contiguous habitat corridor for bear, bobcat, moose, deer and other wildlife (see Connectivity Map for more information).

Rare Species in the Study Area

The Study area is home to many species, habitats and natural features that are rare in the State. The locations of these features are not mapped here in order to protect the sensitivity of their locations.

VT Wild & Scenic Rivers
Upper Missisquoi & Trout Rivers Study

Upper Missisquoi & Trout Rivers Study Area

Geologic Features

Waterfalls

Ecological Features

Study Area Vernal Pools

Deer Wintering Areas

Conserved Lands
 Town Forests
 Public
 Private (Not Shown)

Important Bird Areas (IBAs)
 Bicknell's Thrush
 Peregrine Falcon Eyre

2.5

Miles



Upper Missisquoi and Trout Wild and Scenic Study

Habitat Connectivity

 **Wild & Scenic Study Area**

 **Study Area Towns**


Rivers & Streams

Staying Connected Initiative

Stream Order

Final Connective Areas


 3

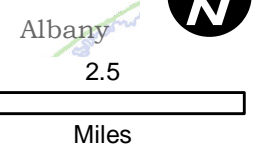
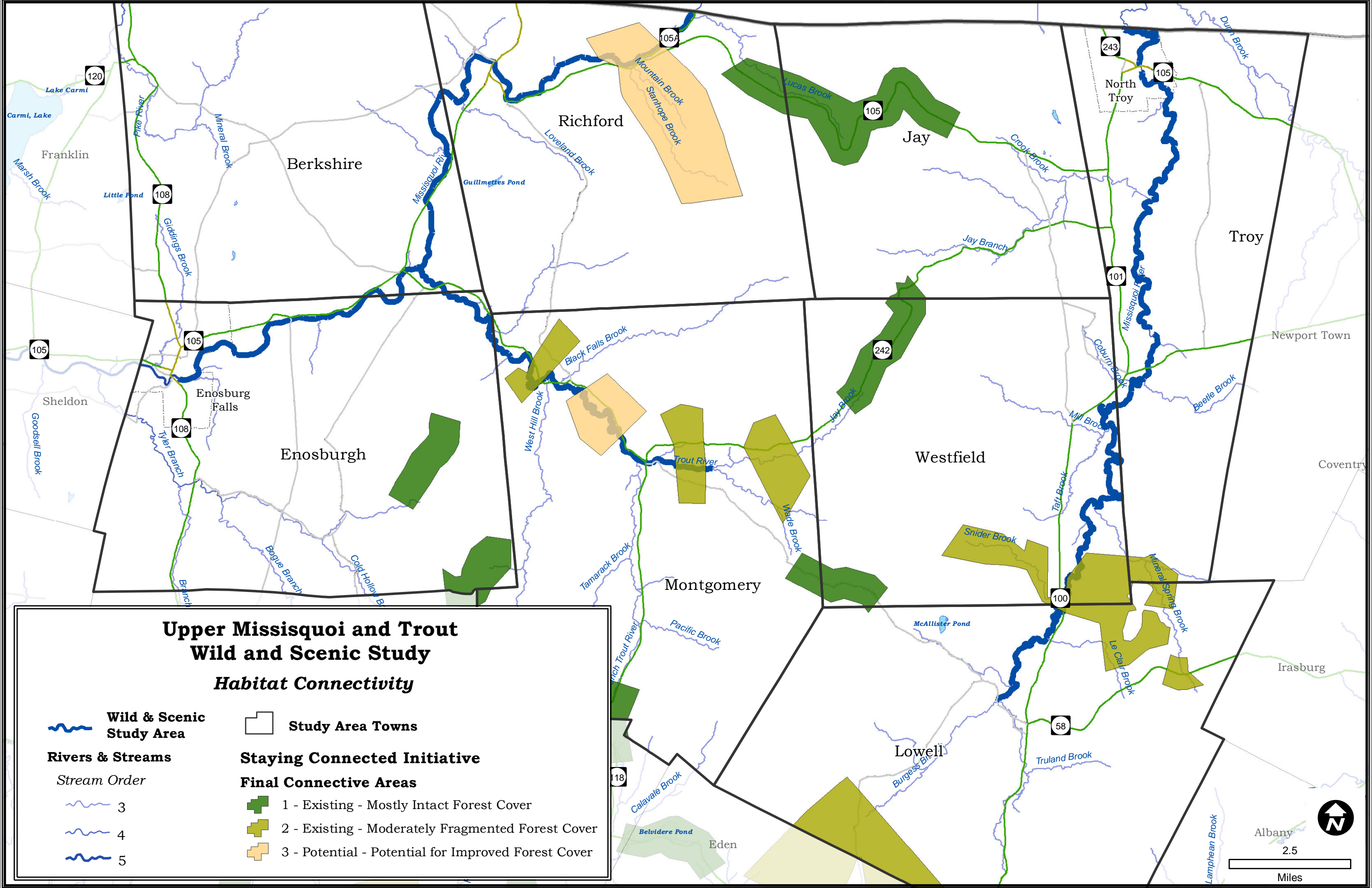
 1 - Existing - Mostly Intact Forest Cover

 4

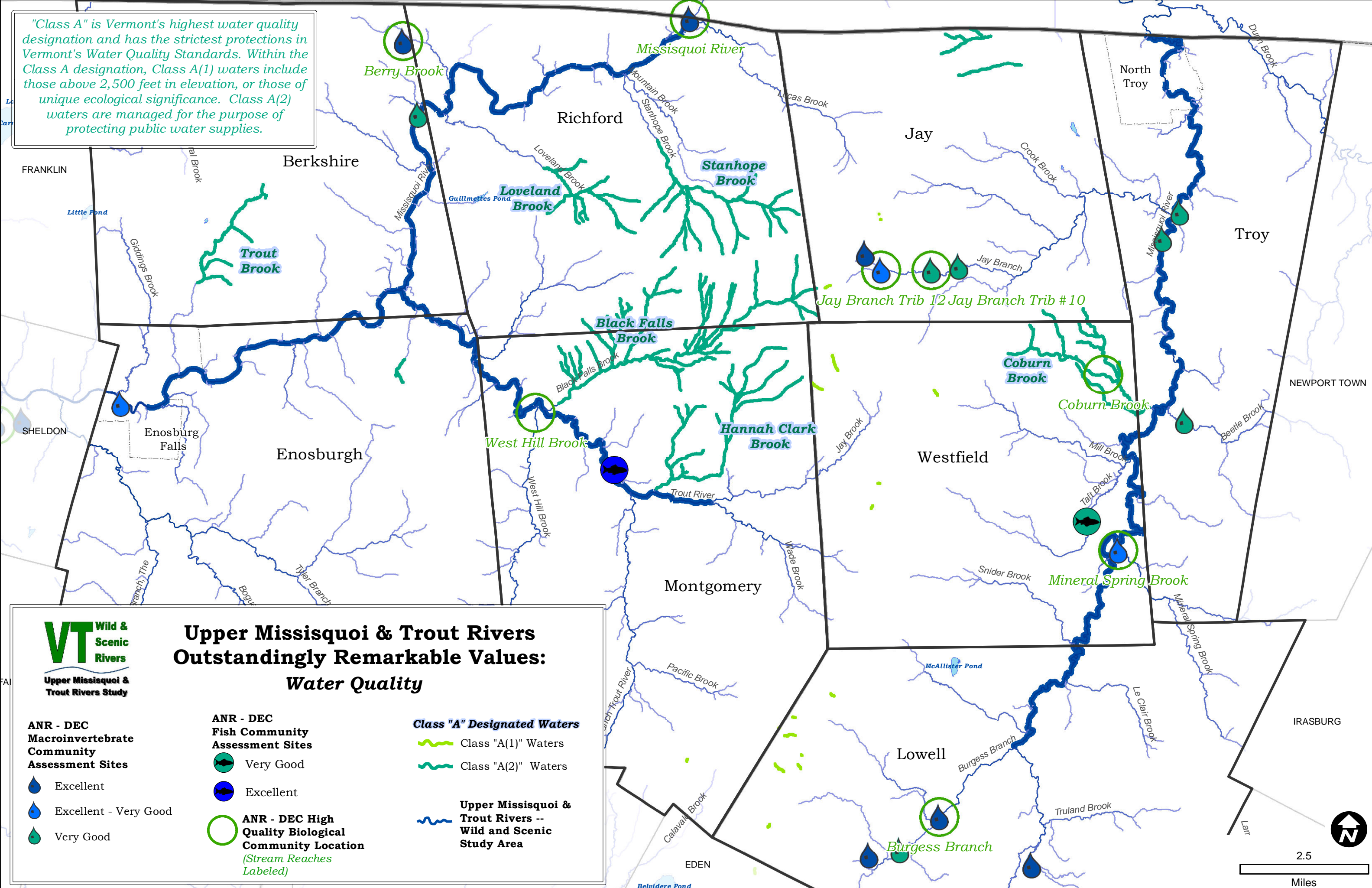
 2 - Existing - Moderately Fragmented Forest Cover


 5

 3 - Potential - Potential for Improved Forest Cover



"Class A" is Vermont's highest water quality designation and has the strictest protections in Vermont's Water Quality Standards. Within the Class A designation, Class A(1) waters include those above 2,500 feet in elevation, or those of unique ecological significance. Class A(2) waters are managed for the purpose of protecting public water supplies.





Upper Missisquoi & Trout Rivers Study

Upper Missisquoi & Trout Rivers Outstandingly Remarkable Values: Water Quality

Class "A" Designated Waters

- ~~~~~ Class "A(1)" Waters
- ~~~~~ Class "A(2)" Waters

Upper Missisquoi & Trout Rivers -- Wild and Scenic Study Area

~~~~~

**ANR - DEC Macroinvertebrate Community Assessment Sites**

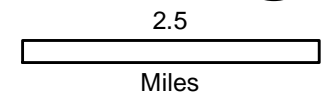
- Excellent
- Excellent - Very Good
- Very Good

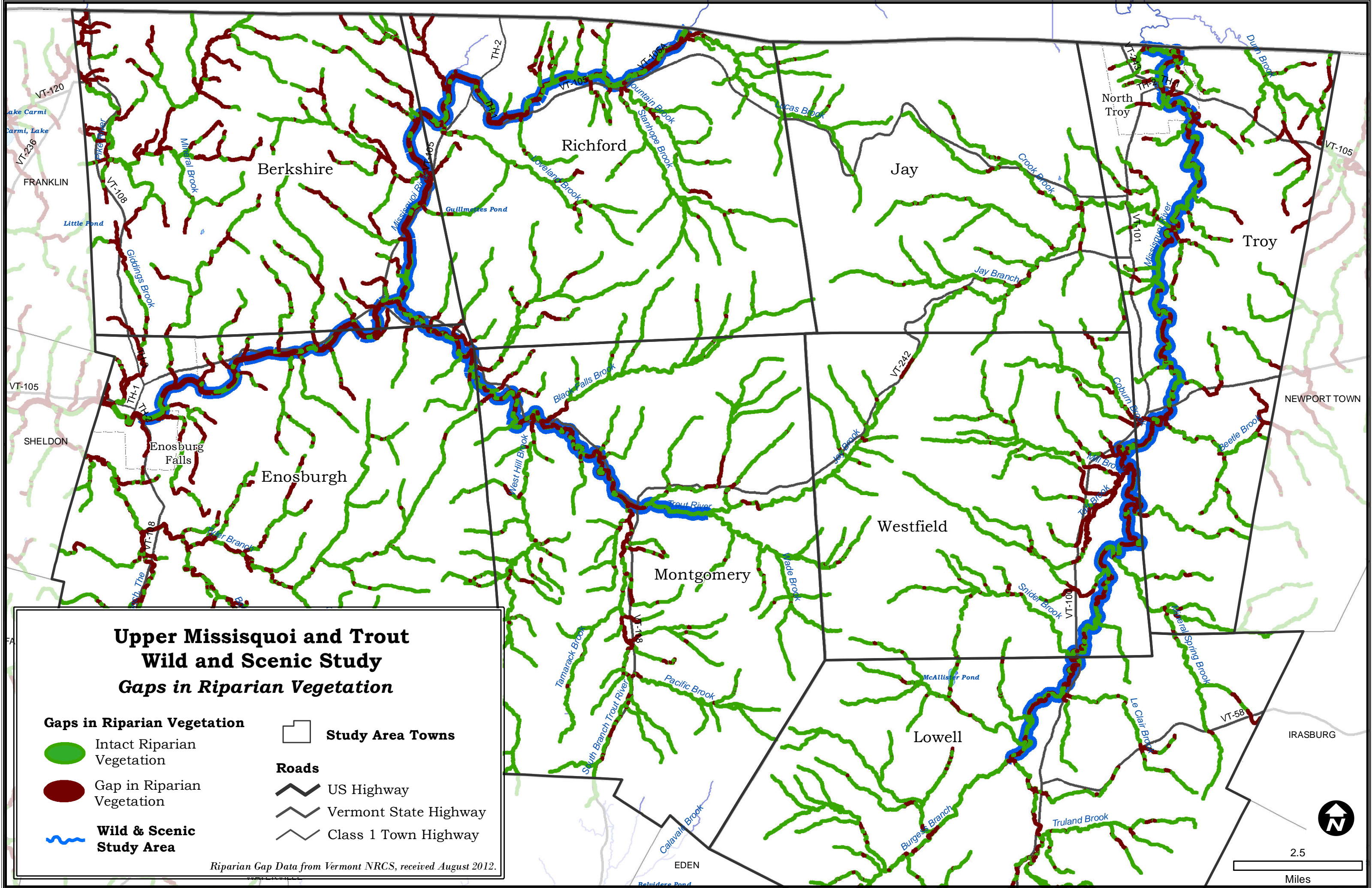
**ANR - DEC Fish Community Assessment Sites**

- Very Good
- Excellent

**ANR - DEC High Quality Biological Community Location (Stream Reaches Labeled)**




-








**Upper Missisquoi and Trout  
Wild and Scenic Study  
Gaps in Riparian Vegetation**

**Gaps in Riparian Vegetation**

-  Intact Riparian Vegetation
-  Gap in Riparian Vegetation
-  Wild & Scenic Study Area

**Study Area Towns**

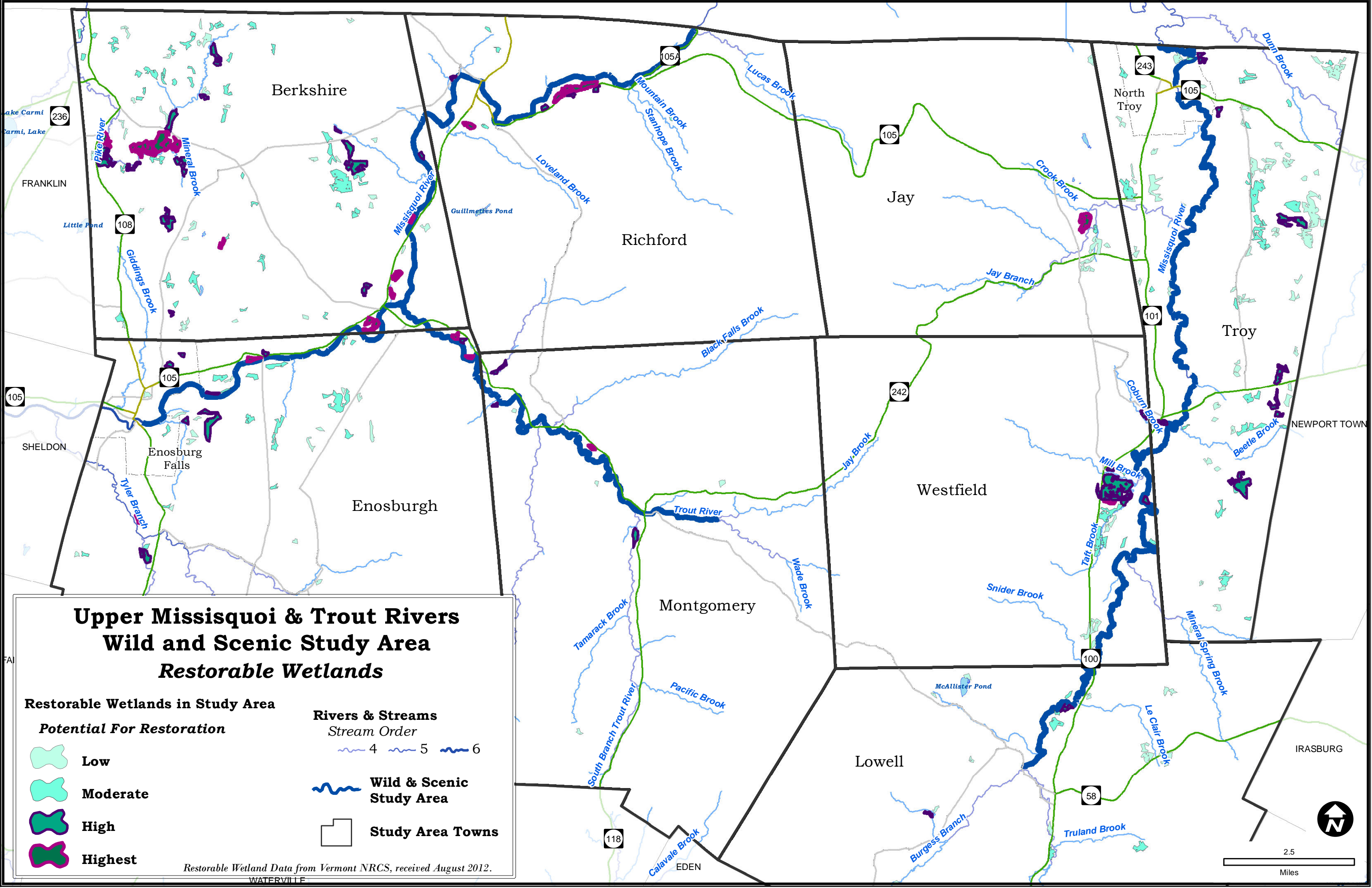
- Roads**
-  US Highway
  -  Vermont State Highway
  -  Class 1 Town Highway

*Riparian Gap Data from Vermont NRCS, received August 2012.*

2.5

Miles





**Upper Missisquoi & Trout Rivers  
Wild and Scenic Study Area  
Restorable Wetlands**

**Restorable Wetlands in Study Area**

*Potential For Restoration*

- Low
- Moderate
- High
- Highest

**Rivers & Streams**

- Stream Order*
- 4
  - 5
  - 6

**Wild & Scenic Study Area**

**Study Area Towns**

*Restorable Wetland Data from Vermont NRCS, received August 2012.*

WATERVILLE

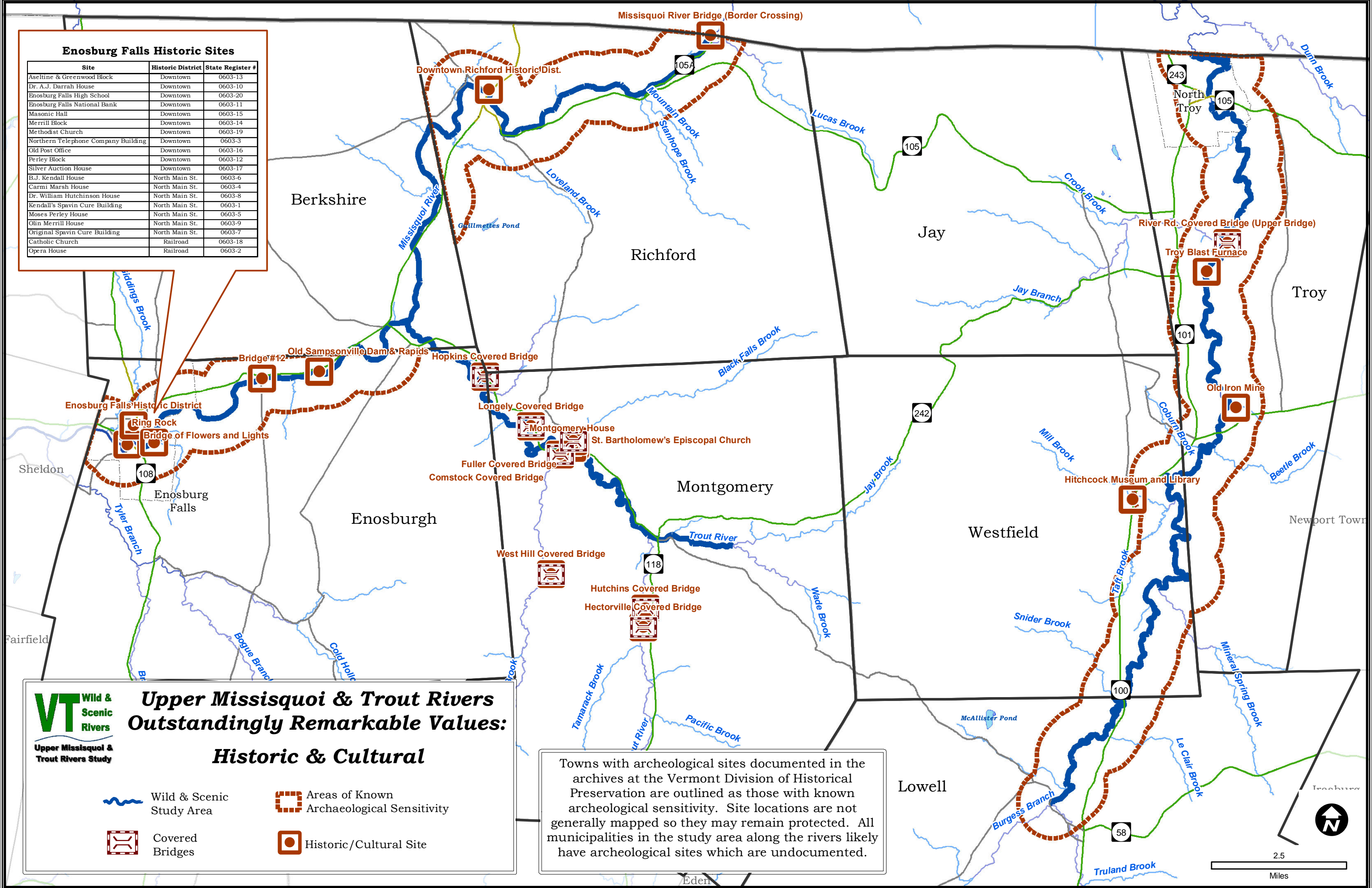
2.5

Miles



### Enosburg Falls Historic Sites

| Site                                | Historic District | State Register # |
|-------------------------------------|-------------------|------------------|
| Aseltine & Greenwood Block          | Downtown          | 0603-13          |
| Dr. A.J. Darrah House               | Downtown          | 0603-10          |
| Enosburg Falls High School          | Downtown          | 0603-20          |
| Enosburg Falls National Bank        | Downtown          | 0603-11          |
| Masonic Hall                        | Downtown          | 0603-15          |
| Merrill Block                       | Downtown          | 0603-14          |
| Methodist Church                    | Downtown          | 0603-19          |
| Northern Telephone Company Building | Downtown          | 0603-3           |
| Old Post Office                     | Downtown          | 0603-16          |
| Perley Block                        | Downtown          | 0603-12          |
| Silver Auction House                | Downtown          | 0603-17          |
| B.J. Kendall House                  | North Main St.    | 0603-6           |
| Carmi Marsh House                   | North Main St.    | 0603-4           |
| Dr. William Hutchinson House        | North Main St.    | 0603-8           |
| Kendall's Spavin Cure Building      | North Main St.    | 0603-1           |
| Moses Perley House                  | North Main St.    | 0603-5           |
| Olin Merrill House                  | North Main St.    | 0603-9           |
| Original Spavin Cure Building       | North Main St.    | 0603-7           |
| Catholic Church                     | Railroad          | 0603-18          |
| Opera House                         | Railroad          | 0603-2           |



**VT Wild & Scenic Rivers**  
**Upper Missisquoi & Trout Rivers Study**

## Upper Missisquoi & Trout Rivers Outstandingly Remarkable Values: Historic & Cultural

- Wild & Scenic Study Area
- Areas of Known Archaeological Sensitivity
- Covered Bridges
- Historic/Cultural Site

Towns with archeological sites documented in the archives at the Vermont Division of Historical Preservation are outlined as those with known archeological sensitivity. Site locations are not generally mapped so they may remain protected. All municipalities in the study area along the rivers likely have archeological sites which are undocumented.

